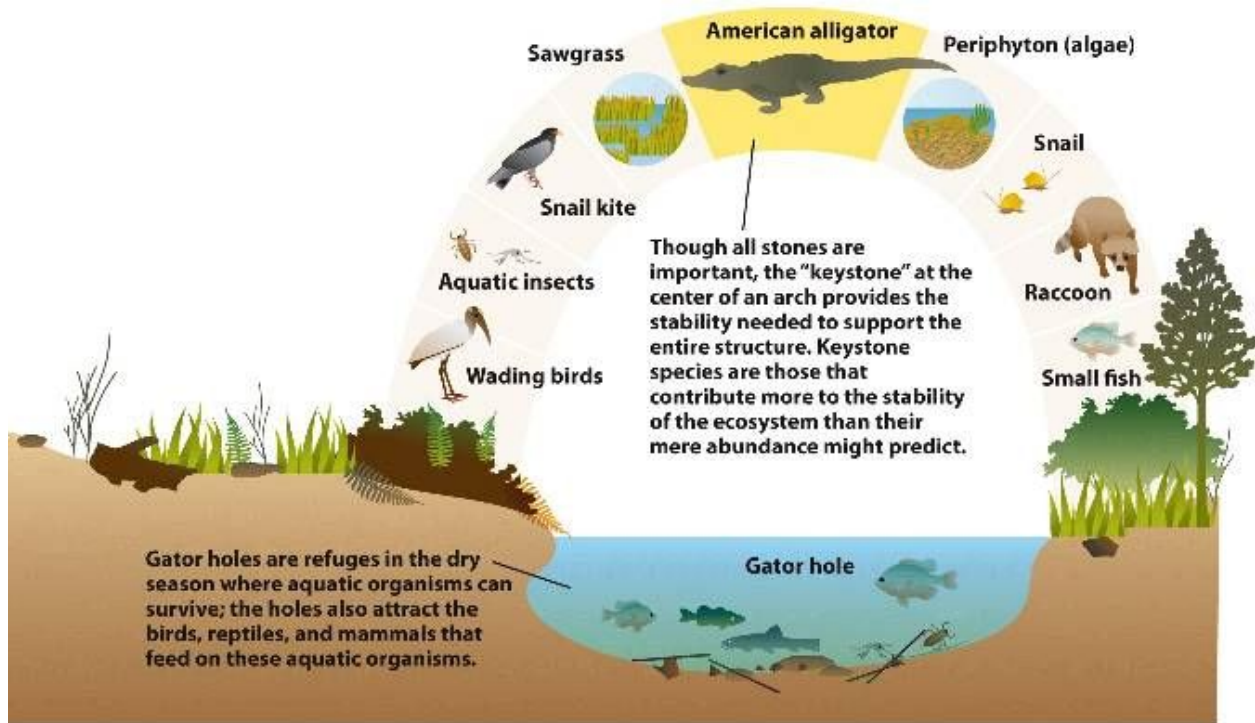


## Extend Activity - Population Counts and Habitat Assessments

Review the infographic below about **alligator holes**, the **Everglades**, and **keystone species**. Refer to your science journal to record answers.



<https://images.app.goo.gl/SRiqnbGpGh5h6v4P9>

1. Snail kites feed almost exclusively on aquatic snails and rarely interact directly with alligators although they occupy the same habitats. Based on the infographic above, describe how these two animals are connected. \*Hint: They aren't directly connected. It might be through other organisms.

---



---



---

2. Name two resources that alligators provide for other organisms in the dry season. Briefly explain.

---

---

---

---

3. Explain how the disappearance of alligators could cause a **trophic cascade**.

---

---

---

---

---

---

---