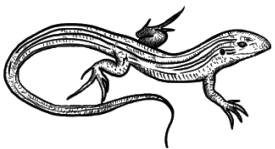
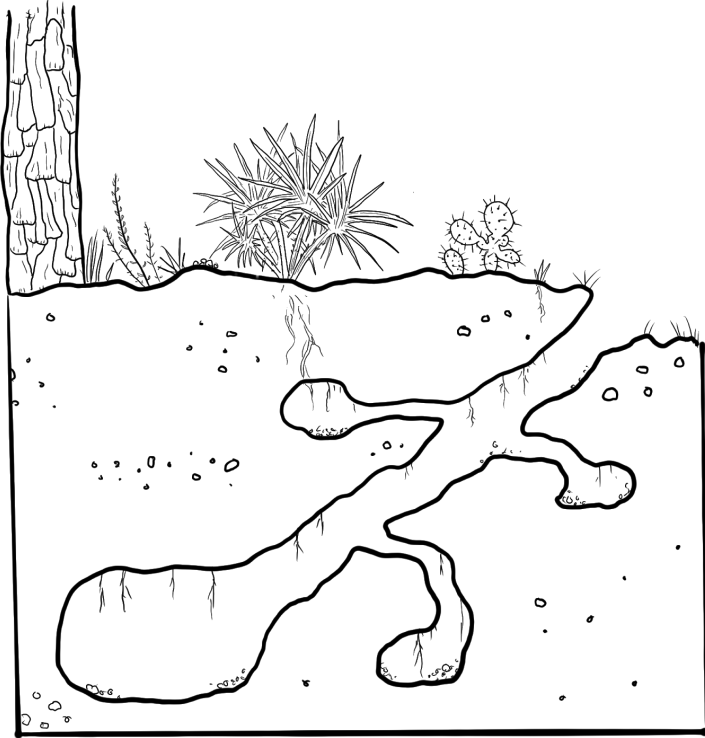


Engage Activity - Population Counts and Habitat Assessments

SUMMER IN THE SCRUB

This is a cross-section of a gopher tortoise burrow during a Southwest Florida **summer**. While surface temperatures are soaring to over **100°F**, the temperature in the burrow rarely reaches beyond **80°F**. Many organisms depend upon these burrows during the summer months when the scrub can experience extreme heat and even fires. Below are some animals that live in the Florida scrub habitat. **Briefly describe two ways you think each organism depends upon gopher tortoise burrows during the Southwest Florida summer. It's okay to get it wrong. This is just to get you thinking. Let's see what you come up with!**



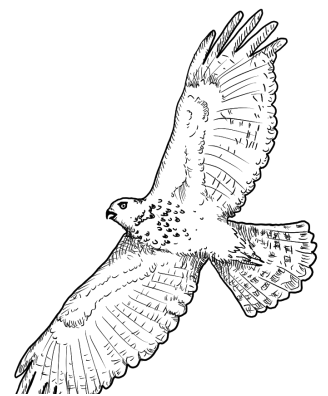
Six-lined racerunner

1) _____

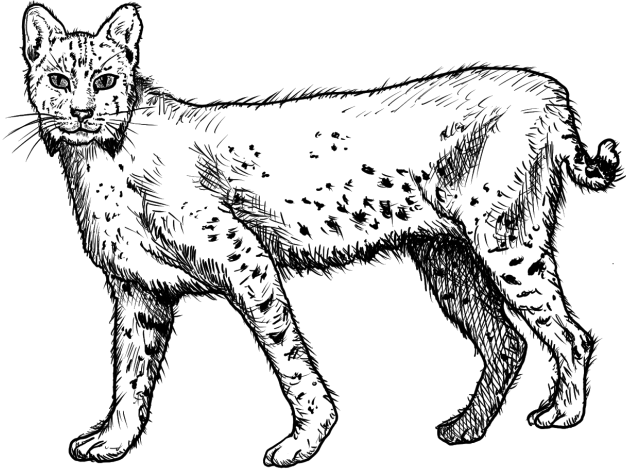
2) _____

Red-shouldered hawk

1) _____



2) _____



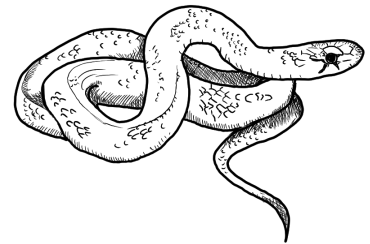
Bobcat

1) _____

2) _____

Eastern indigo snake

1) _____



2) _____

