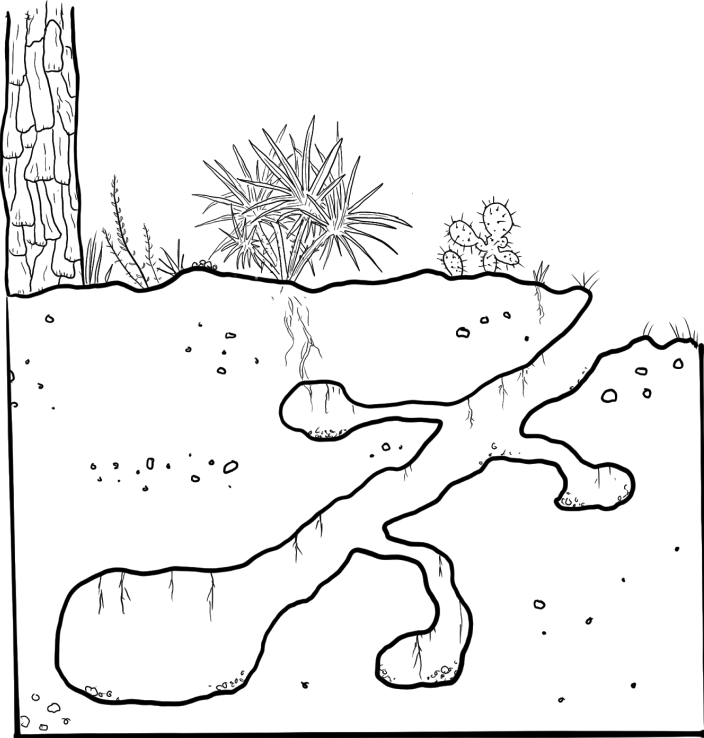


Engage Activity - Population Counts and Habitat Assessments



WINTER IN THE SCRUB

This is a cross-section of a gopher tortoise burrow during a Southwest Florida **winter**. While surface temperatures can drop to **50°F** or lower, the temperature in the burrow rarely dips below **65°F**. Many organisms depend upon these burrows during the winter months when the scrub can experience colder temperatures and occasionally fires. Below are some animals that live in the Florida scrub habitat. **Briefly describe two ways you think each organism depends upon gopher tortoise burrows during the Southwest Florida winter. It's okay to get it wrong. This is just to get you thinking. Let's see what you come up with!**



Gopher frog

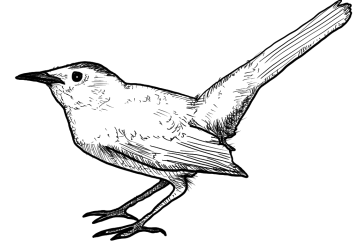
1)

2)

Gray catbird

1)

2)



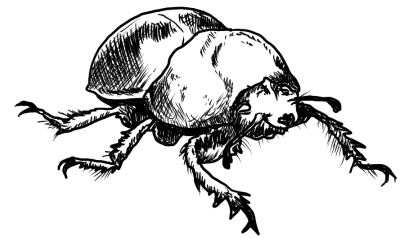
Florida mouse

1)

2)

1)

2)



Dung beetle