

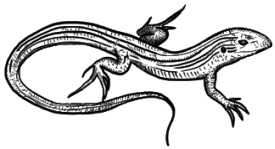
Science Journal: Population Counts and Habitat Assessments

MAKE A COPY OF THIS JOURNAL TO
RECORD YOUR UNDERSTANDING!
(Go to "File" then "Make a copy")

Engage

1. Briefly describe two ways you think each organism depends upon gopher tortoise burrows during the Southwest Florida summer.

Six-lined racerunner

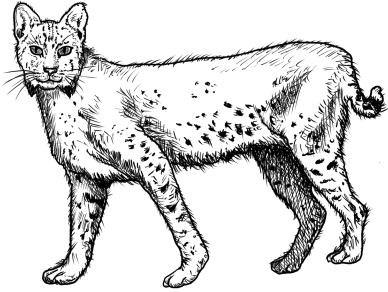


Red-shouldered hawk

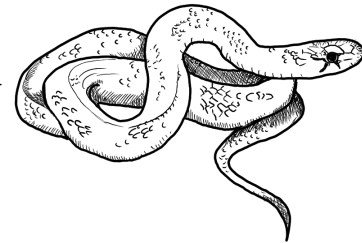




Bobcat



Eastern indigo snake

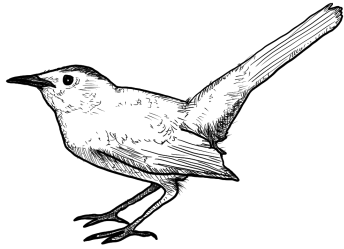


2. Briefly describe two ways you think each organism depends upon gopher tortoise burrows during the Southwest Florida winter.



Gopher frog

Gray catbird



Florida mouse





Dung beetle

Explore

1. Complete the habitat assessment and anole population count.

Explain

1. What was the TOTAL number of anoles you observed in your samples?
2. What was the AVERAGE number of anoles in perch habitats? Open areas?
3. Which habitat do you think anoles prefer? Why?
4. You took SAMPLES of the anole population in your school or backyard habitat. How would you approach calculating the TOTAL number of anoles in the entire habitat?

5. What do you think would happen to anole populations in your outside habitat if you eliminated all perches? Why?

Extend

1. Snail kites feed almost exclusively on aquatic snails and rarely interact directly with alligators although they occupy the same habitats. Based on the infographic above, describe how these two animals are connected.
2. Name two resources that alligators provide for other organisms in the dry season. Briefly explain.
3. Explain how the disappearance of alligators could cause a **trophic cascade**.

Evaluate

After you have completed your population count and habitat assessment, share your findings with your classmates, teacher, family, and friends. Note any differences and similarities and discuss what you have learned!